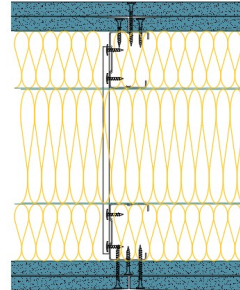


## TWC50-B-59(2x50+100)(250) - SPEEDLINE System Data Sheet - Version V1 (24-10-23)

Twin SPEEDLINE 50mm 'C' Stud Braced Partition  
@600mm Ctrs, with 2x BG Gyproc 12.5mm  
SoundBloc each side, 50+50+100mm APR



### System Performance Breakdown

Fire Resistance:

BS476 Part 22:1987:

Test Ref & Date or Applied Ref & Report:

Max Height:

Thickness:

Duty Grade: BS 5234: Part 2:1992:

Sound Insulation:

60/60 Minutes (Integrity/Insulation).

BTC 17580F - BRE Report P102396-1011A

Refer to Speedline Specification Clause

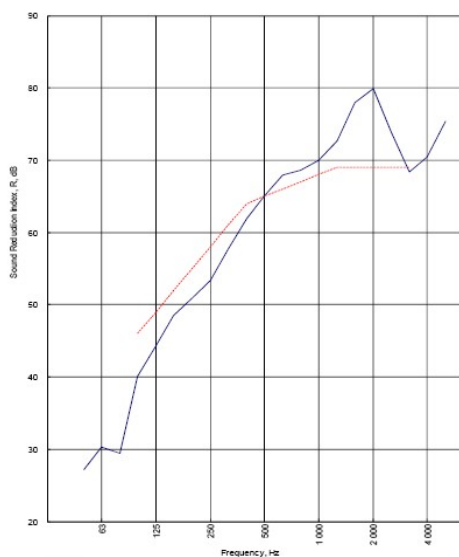
250 mm. (At Base Track, Excluding Finishes)

Severe - Annexes A-F

65  $R_w$ dB-8Ctr, Date Tested or Assessed Against - 03/03/2015

Test Code:  
H19006AA  
Test Date:  
03/03/2015

Freq. Hz	R dB
50	27.2
63	30.3
80	29.4
100	40.1
125	44.3
160	48.5
200	50.9
250	53.4
315	57.7
400	61.9
500	65.0
630	67.9
800	68.6
1 000	70.0
1 250	72.7
1 600	78.0
2 000	79.9
2 500	74.0
3 150	68.4
4 000	70.4
5 000	75.4



Rating according to BS EN ISO 717-1:2013	<b><math>R_w</math> (C;Ctr) = 65 (-2;-8) dB</b>
Evaluation based on laboratory measurement results obtained by an engineering method:	Max dev. 5.9 dB at 100 Hz
	$C_{50-3150}$ = -7 dB $C_{50-500}$ = -6 dB $C_{100-500}$ = -1 dB
	$C_{50-3150}$ = -18 dB $C_{50-500}$ = -18 dB $C_{100-500}$ = -8 dB

TESTED AT ONE OF THE UKAS  
ACCREDITED LABORATORIES  
BELOW

B.T.C  
(H-Ref on Graph)

B.R.E

AIRO

S.R.L



Customer: Voestalpine Metsec Plc Dry Lining

BTC 19006A: Page 10 of 13



SPEEDLINE Drywall Systems, Adsetts House, 16 Europa View, Sheffield Business Park, Sheffield, S9 1XH.

Tel: 0114 231 8030.

Email: [enquiries@speedlinedrywall.co.uk](mailto:enquiries@speedlinedrywall.co.uk)

(As per the requirements set out in ISO/IEC 17025:2017 regarding test data the results stated have been carried out by voestalpine Metsec plc as part of the contract to supply Speedline Metal Sections to SIG Plc)